

Manufactured Gas Plant (MGP) Site Remediation



Today, there are thousands of former Manufactured Gas Plant (MGP) sites across the country that may be investigated and remediated.

TRC brings an in-depth understanding of utilities' former manufacturing gas plant processes, how these MGP wastes interact within the environment, the actual risks posed, and the best technical solution.

In addition to our involvement in historical investigations, site characterizations, building decommissioning, risk assessments, and feasibility studies at nearly 60 MGP sites with both upland and waterway impacts for utility and industrial clients, TRC has installed caps, hydraulic control systems, slurry walls, reactive walls, pipe sealing and liner systems, excavation with off-site treatment, and in situ stabilization.

Services include:

- Perimeter Air Monitoring
- Building Demolition / Decommissioning
- State-of-the Art Sediment Remediation
- Public Outreach and Education
- Regulatory Liaison
- Remedial Design/Engineering
- Remediation/Construction
- Risk Assessment
- Site Assessment and Remedial Investigation



Owners of MGP sites face a number of challenges, including contamination of sediment and surface water with coal tar, PAHs, VOCs, metals, and cyanide.

About TRC

A pioneer in groundbreaking scientific and engineering developments since the 1960s, TRC is a national engineering, consulting and construction management firm providing integrated services to the power, oil and gas, environmental and infrastructure markets. We serve a broad range of clients in government and industry, implementing complex projects from initial concept to operations. TRC delivers results that enable clients to achieve success in a complex and changing world.

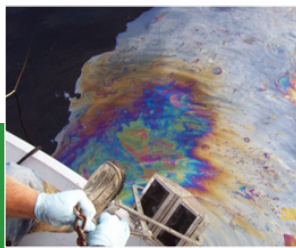
TRC includes over 4,000 technical professionals and support personnel in more than 120 offices throughout the U.S. Our clients depend on TRC's multidisciplinary teams to design solutions to their toughest business challenges.

Representative Clients

- Alliant Energy
- Beazer Corporation
- Brooklyn Union Gas Company
- Central Hudson Gas & Electric Company
- Central Maine Power
- City of Bangor, ME
- City of Keene, NH
- City of New York, Department of Environmental Protection (NYCDEP)
- Colonial Gas
- Con Edison
- DTE Energy
- GPU Energy
- KeySpan Energy
- Knoxville Utilities Board
- National Grid
- New York State Electric & Gas
- Newport Associates Development Corporation
- Niagara Mohawk Power Corporation
- Pennsylvania Power & Light Company
- Rohm Tech, Inc.
- SCANA Services, Inc.
- Southern California Gas Company
- Wisconsin Department of Natural Resources
- Wisconsin Department of Transportation



When TRC created the Exit Strategy Program, The Wall Street Journal praised it as a "radical experiment" to end the "tangle of litigation" around U.S. Superfund law."



Sheen Formed at MGP Impacted Sediment Site.



TRC served as the MGP technical expert for USEPA Region 2 during the RI/FS for the Saratoga Springs Superfund Site.



Installation of a Slurry Wall to Solve Groundwater Flow

Why TRC?

- Decades of experience working with utilities
- Most cost-effective and reliable remedies for sediment impacts

For more information, please contact:
Thomas Stolzenburg at TStolzenburg@trcsolutions.com, 608.826.3661
Stacy McAnulty at SMcanulty@trcsolutions.com, 608.826.3683

www.trcsolutions.com

